



ROCKMOUNT DEVELOPMENTS, LIVERPOOL

Yew Tree Road, Allerton, Liverpool – New Build Apartments

Case Study

Project Value: £13 Million // Programme: 52 Weeks

OVERVIEW

Frank Rogers secure second new build project working in collaboration with Rockmount to develop 5 two bedroom luxury apartments located opposite Calderstones Park, Liverpool.

SCOPE OF WORKS

Initial works focused upon a sensitive demolition programme working with approved specialist subcontractors removing existing buildings and ground investigation, clearing the site ready to commence a strict build programme.

HIGH STANDARD

Our Design Coordinator worked in collaboration with Rockmount's architectural team developing thorough design schedules across the entire project, coordinating with construction managers ensuring absolute quality control in product / material selection.

PROGRAMME

We developed a successful mobilisation programme immediately following contract award, identifying specific phases including key milestones informing Rockmount of actions required. Construction Manager, Dave Bracegirdle held a series of supplier pre-contract meetings determining new build parameters, identifying; scope of works, roles and responsibilities, quality standards, programme and payment ensuring all parties completely understood the project. Overseeing early enabling works, ground investigation, securing design clarity and appointment of subcontractors permitted programme accuracy throughout the build.

BUDGET

We attended monthly progress meetings discussing valuations, variations producing anticipated final account projections informing Rockmount decisions, promoting transparency and cost control.

CUSTOMER SATISFACTION & TESTIMONY

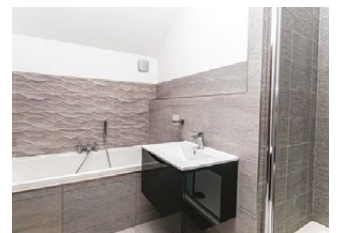
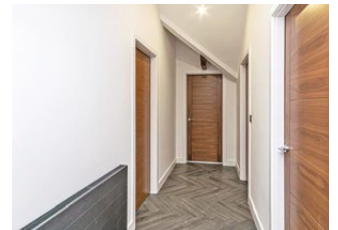
Our approach to collaboration and working as a wider team achieved timely programme, property sales and new resident move-ins before Christmas as planned.

Simon Kinsella, Managing Director of Rockmount added:

"There is demand for quality, luxury apartments in this area and we are undoubtedly offering a fresh alternative to the traditional builds, supported by our partner contractor Frank Rogers who continue to deliver on time, budget and to an exceptional standard."

Dean Rogers, Managing Director of Frank Rogers added:

"We are seeing an increase in privately funded clients turning to us to deliver schemes of this nature. As an experience developer in our own right we have the knowledge and resources to be able to manage a complete build, supporting clients at each stage from planning through to completion."



Frank Rogers Building Contractor Limited The Stables, Larkhill Lane, Liverpool L13 9BR

Tel: 0151 226 0323 | Fax: 0151 270 2854 | Email: info@frbc.co.uk | Web: www.frankrogers.co.uk

